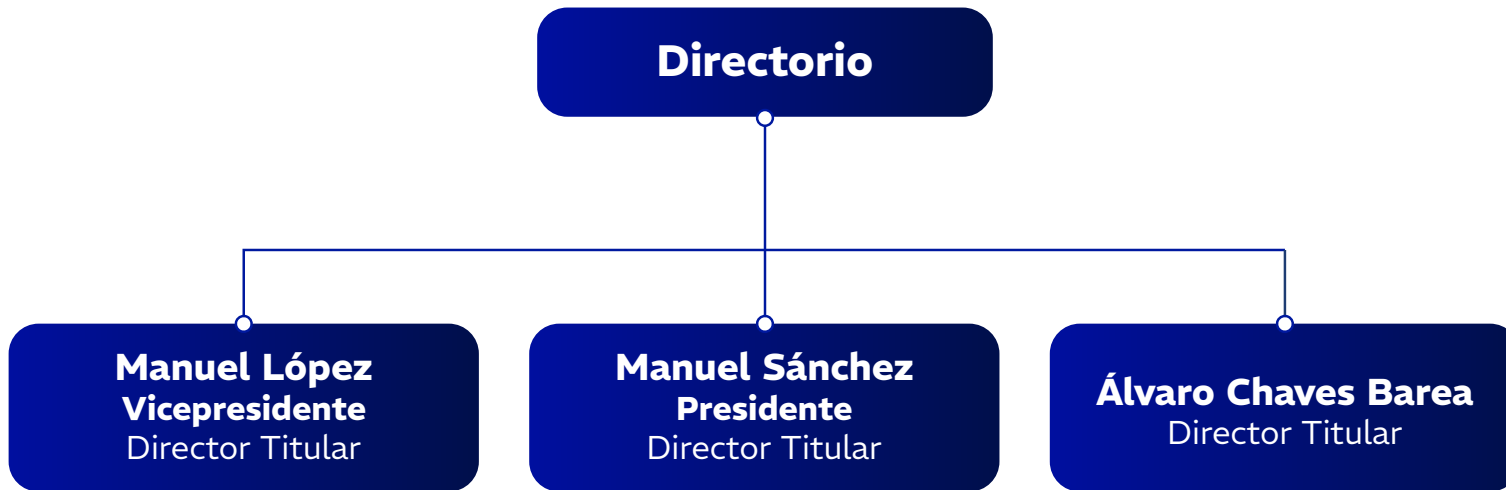




**IMPULSA MENDOZA<sup>SA</sup>**

# Organigrama Directorio y Comisión Fiscalizadora



**Comisión fiscalizadora**



```
graph TD; A[Comisión fiscalizadora] --- B[Viviana Inés Artaza  
Contadora pública y  
perito partidor]; A --- C[Mariana Selva Silvestrini  
Contadora pública]; A --- D[Gustavo Gil  
Abogado];
```

The diagram is an organizational chart for the 'Comisión fiscalizadora'. It features a central top box connected by a vertical line to a horizontal line, which then branches into three vertical lines leading to three separate boxes below. The boxes are arranged horizontally and contain the names and professional titles of the commission members.

**Viviana Inés Artaza**  
Contadora pública y  
perito partidor

**Mariana Selva Silvestrini**  
Contadora pública

**Gustavo Gil**  
Abogado